

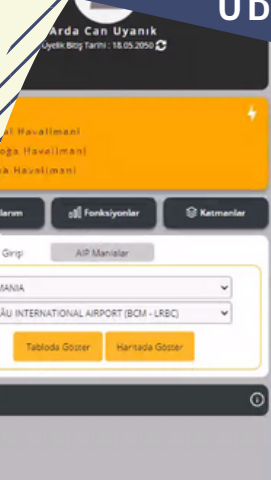
# WHAT DO WE HAVE IN OBSTACLEANALYZE?

VIEW CONSTRUCTION CRITERIA FOR THE AREA REMAINING WITHIN THE OBSTACLE LIMITATION SURFACES

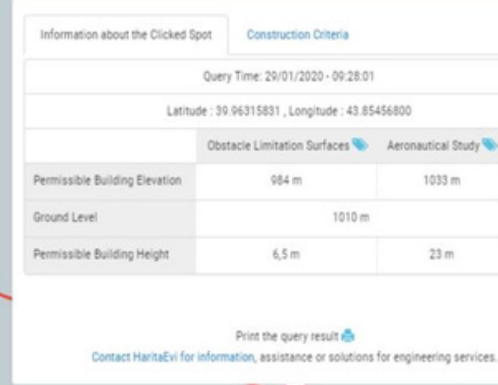


Information about the Clicked Spot	
Query Time: 10/01/2020	
Latitude : 40.9900563 , Longitude : 30.9631583	
Obstacle Limitation Surfaces	
Permissible Building Elevation	74 m
Ground Level	69 m
Permissible Building Height	6,5 m
	25 m
	51 m

OBSTACLE QUERY, ADD OBSTACLE, AND MANAGE OBSTACLE



VIEW SHIELDING AND AERONAUTICAL STUDIES



Information about the Clicked Spot	
Query Time: 29/01/2020 - 09:28:01	
Latitude : 39.96315831 , Longitude : 43.85456800	
Obstacle Limitation Surfaces	
Permissible Building Elevation	984 m
Ground Level	1010 m
Permissible Building Height	6,5 m
	23 m

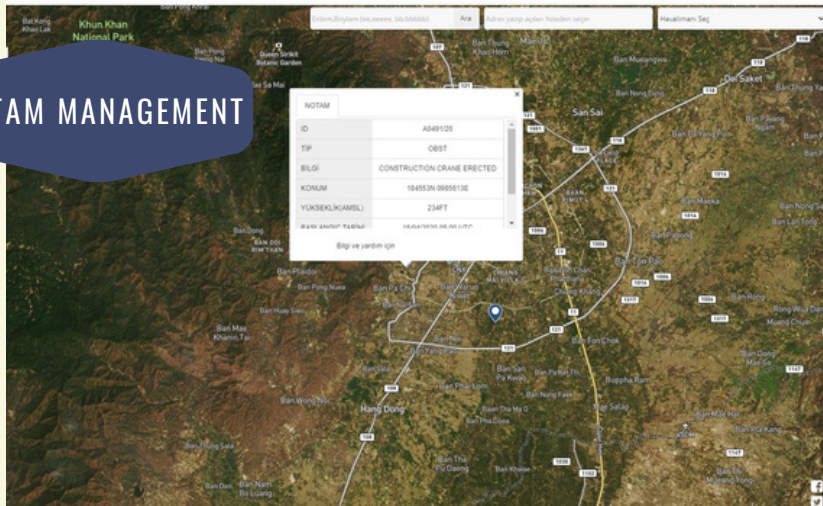
OBSTACLEANALYZE IS A SOFTWARE PLATFORM DEVELOPED BASED ON AERONAUTICAL INFORMATION MANAGEMENT SINCE 2016.



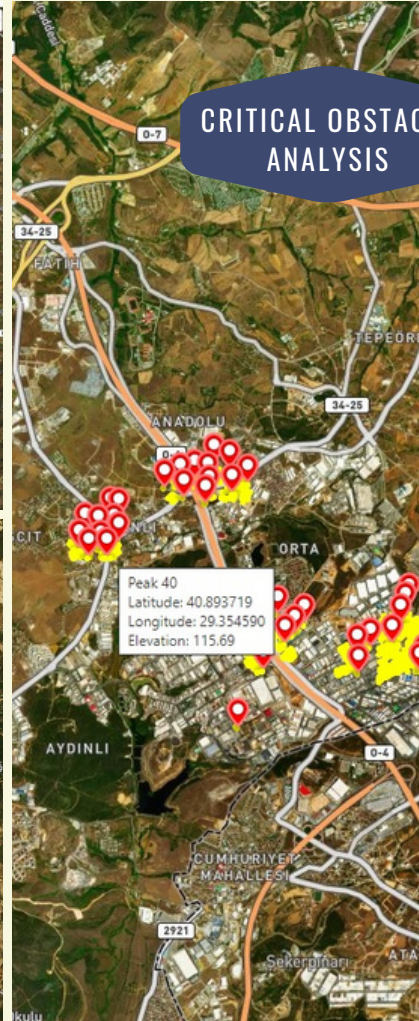
OBSTACLEANALYZE IS HARITAEVI PRODUCT

# WHAT FUNCTIONS ARE THERE IN OBSTACLEANALYZE?

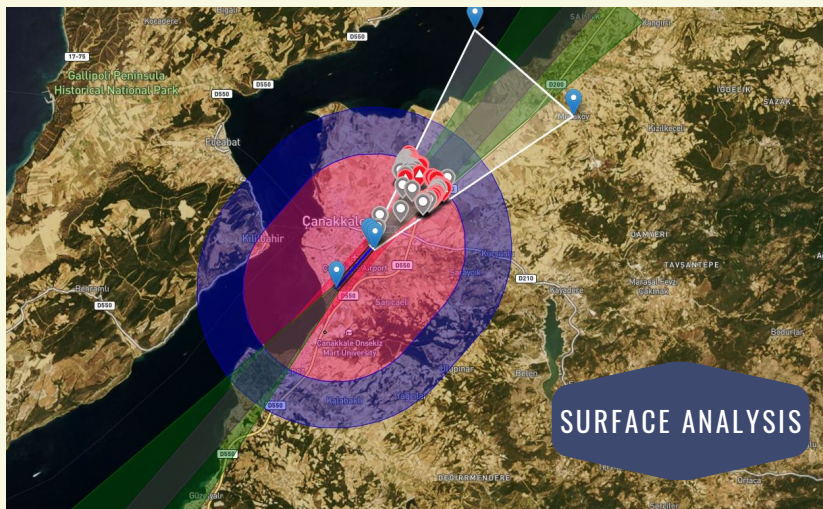
## NOTAM MANAGEMENT



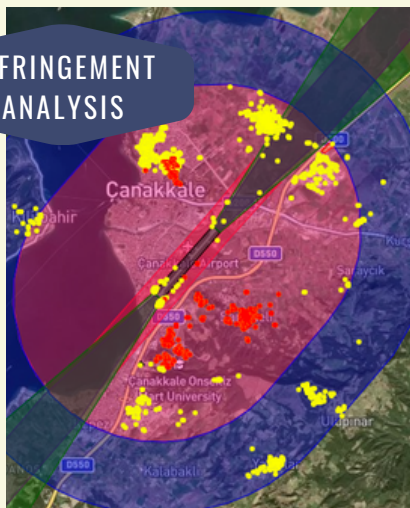
## CRITICAL OBSTACLE ANALYSIS



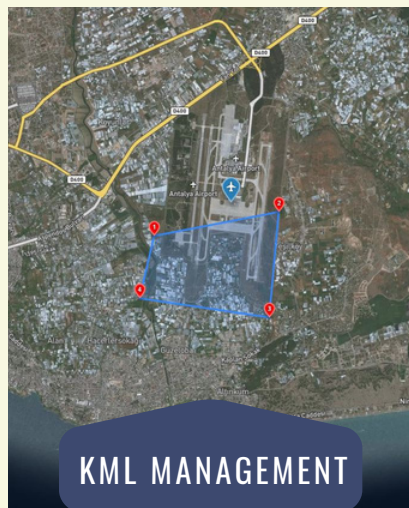
## SURFACE ANALYSIS



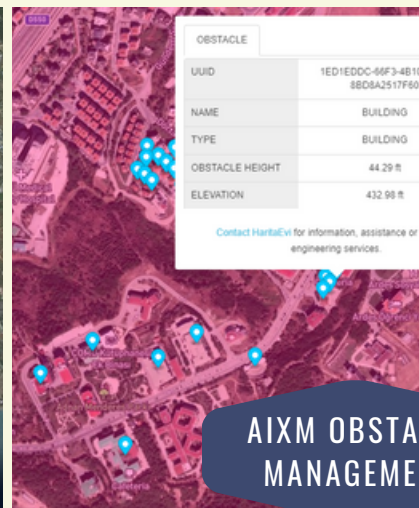
## INFRINGEMENT ANALYSIS



## KML MANAGEMENT



## AIXM OBSTACLE MANAGEMENT



# WHAT IS SURFACE ANALYSIS?

YOU CAN CREATE A SURFACE FOR SID PROCEDURES BY ENTERING INFORMATION SUCH AS THE AIRPORT, RUNWAY INFORMATION, DEPARTURE PERCENTAGE ETC.

The screenshot shows the web application interface for creating a surface. It includes a dropdown menu for selecting an airport (currently showing 'CANAKKALE HAVALIMANI (CKZ - LTBH)'), a radio button for selecting a runway (currently showing '22'), and input fields for 'Mesafe(m)' (10000), 'Pist Yan(m)' (150), 'Kalkış Yüzdesi(%)' (2.5), and 'Açılma Açısı(°)' (15). There are buttons for 'YÜZEY OLUŞTUR' (Create Surface) and 'ANALİZ ET' (Analyze).

Yükle

Yüzey Analizi

CANAKKALE HAVALIMANI (CKZ - LTBH)

Pist Başı Seçiniz

22 ☐ 04

Mesafe(m)

Pist Yan(m)

Kalkış Yüzdesi(%)

Açılma Açısı(°)

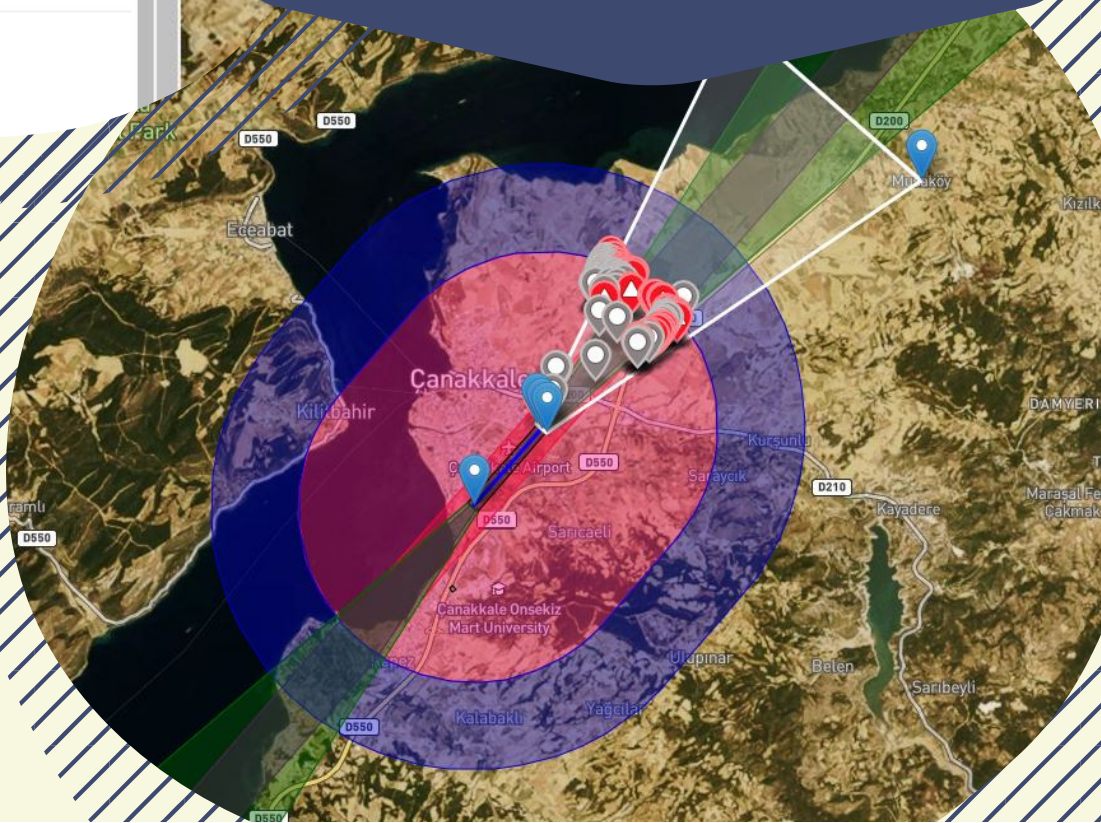
YÜZEY OLUŞTUR

Mania Kümesini Seçiniz

☐ AIP Manialar

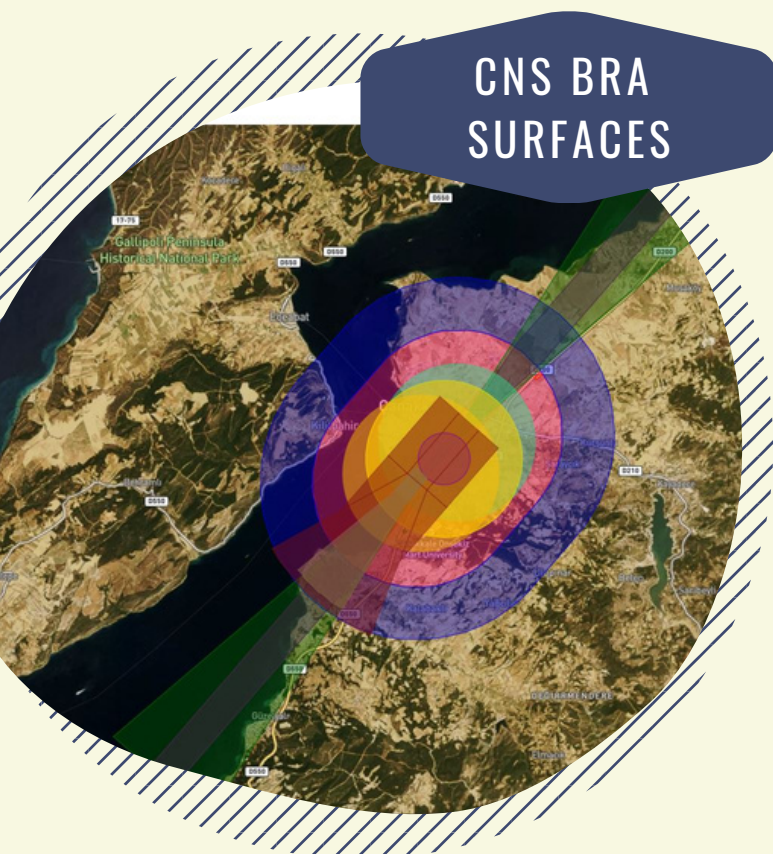
ANALİZ ET

YOU CAN VIEW OBSTACLES THAT INFRINGEMENT THE SURFACE YOU CREATE WITH INFRINGEMENT AMOUNTS.

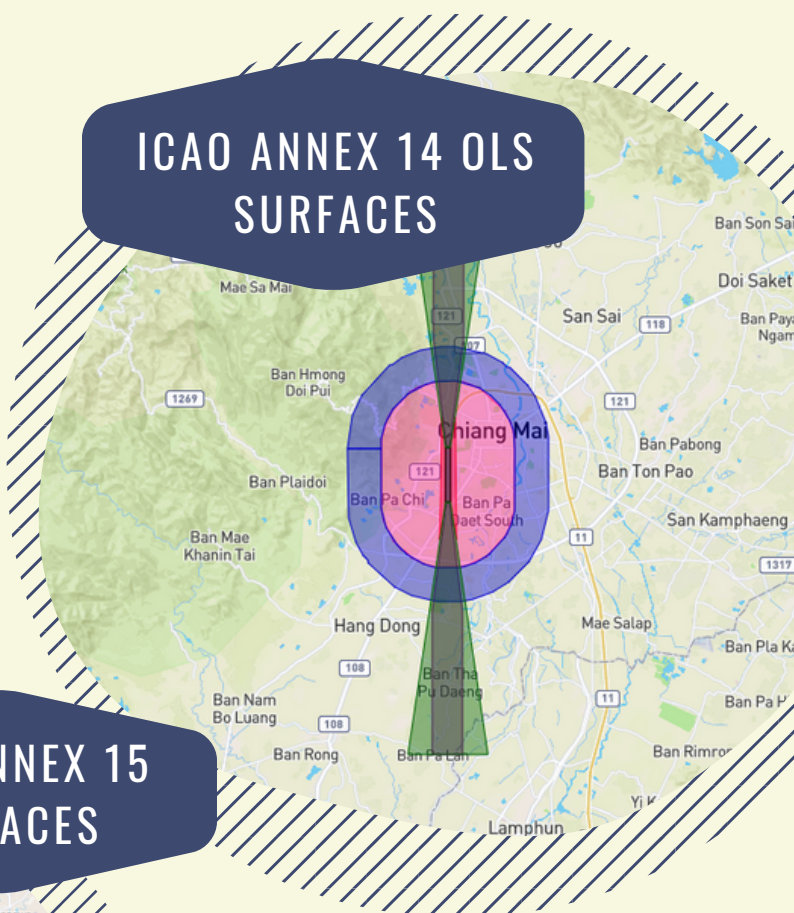


# WHICH LAYERS ARE THERE IN OBSTACLEANALYZE?

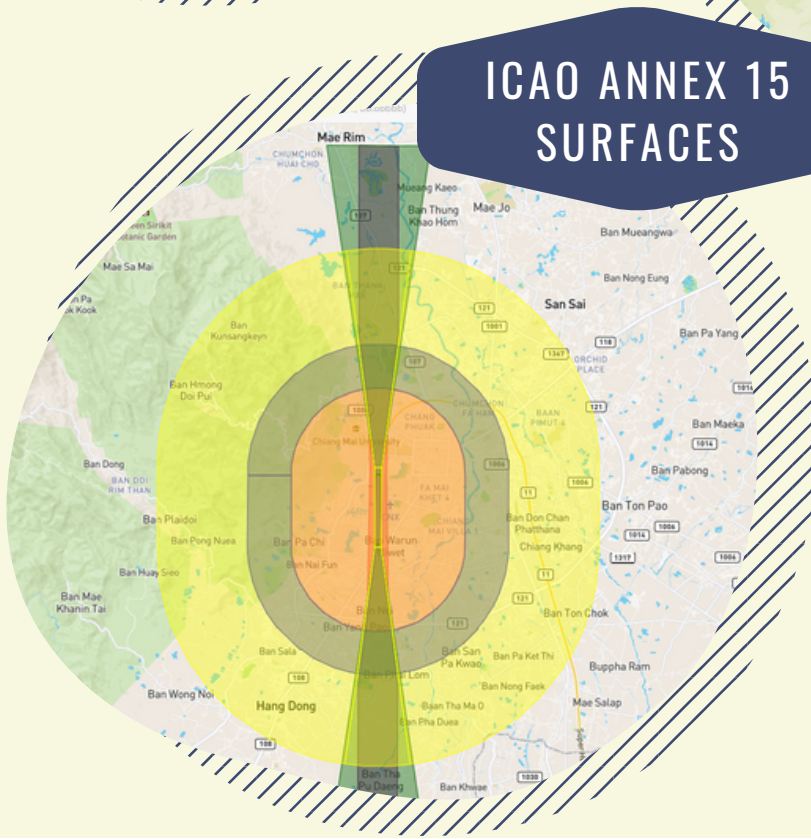
**CNS BRA SURFACES**



**ICAO ANNEX 14 OLS SURFACES**



**ICAO ANNEX 15 SURFACES**



# WHAT CAN BE DONE WITH CNS (NAVAIDS) BRA SURFACES ?

YOU CAN QUERY A SPOT.

Information about the Clicked Spot

Query T

Latitude : 40.14371464 , Longitude : 26.453

Obstacle Limitation Surfaces	
Permissible Building Elevation	11 m
Ground Level	11 m
Permissible Building Height	0 m

Print the query result

Contact HaritaEvi for information, assistance or solutions for engineering services.

YOU CAN COMMENCE A LINE  
OF SIGHT ANALYSIS.



# HOW CAN YOU ADD AN OBSTACLE?

YOU CAN ADD AN OBSTACLE WITH AIXM 5.1 FEATURES

Form ile Kayıt

Dosyadan Yükle

Mania Adı: Mania Adı

Havalimanı\*: ÇANAKKALE HAVALIMANI (CKZ - LTBH)

Enlem\*: 40.11352662937574

Boylam\*:

Koordinat Tipi: GEOGRAPHIC

Mania Tipi:

Yarıçap: 3

Zeminden Yükseklik: 30

Denizden Yükseklik\*:

Projeksiyon: Seginiz

Datum:

Merkez Meridyen: Seginiz

İşaretleme:

Grup: ☐ Evet ☒ Hayır

Aydınlatma:

Grup Aydınlatma: ☐ Evet ☒ Hayır

Aydınlatma Rengi:

ICAO Aydınlatma: ☐ Evet ☒ Hayır

Açıklama

\* ile gösterilen alanların doldurulması zorunludur.

Sıfırla

YOU CAN UPLOAD FILES AS .XLSX, .KML, .CSV AND .TXT ACCORDING TO ETOD STANDARDS.

Form ile Kayıt

Dosyadan Yükle

Havalimanı\*: Havalimanı Seç

Dosyadan mania yüklemek için lütfen aşağıdaki dosya formatlarından birini seçin ve sisteme bir dosya yükleyin.

☐ KML ☐ TXT

Dosya seçmedi Dosya Seç

\* ile gösterilen alanların doldurulması zorunludur.

Dosyadan Okunan Manialar

Maniaları Kaydet

YOU CAN ADD AN OBSTACLE BY CLICKING ON THE MAP.

Enlem,Boylam (ee.eeeee, bb.bbbbbb) Ara Adres yazıp açılan listeden.

Tıklanan Noktaya Dair Bilgiler

Yapılma Kriterleri

Sorgulama Zamanı: 2020-10-28 23:24:47

Enlem : 40.07807143 , Boylam : 26.36688384

Mania Planı

Kalkış-Terminaj Yüzey Kotu	142 m
Yaklaşma Yüzey Kotu	156 m
İzin Verilen Yapı Kotu	142 m
Zemin Kotu	11 m

☐ Bu noktayı mania olarak ekle.

Sorgu sonucunu yazdırın

Bilgi, yardım veya mühendislik hizmeti ile çözüm için HaritaEvi ile iletişime geçiniz.

# OBSTACLE ACCESS FROM DIFFERENT SOURCES

OBSTACLES PUBLISHED IN  
COUNTRY AIP'S.



USER OBSTACLES



EASY OBSTACLE TRAKING

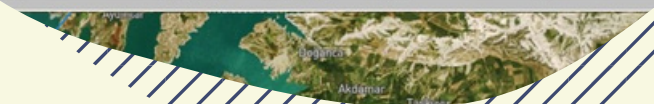
YOU CAN MANAGE OBSTACLES FROM DIFFERENT  
SOURCES ACCORDING TO INTERNATIONAL  
STANDARDS ON YOUR SYSTEM.

# HOW DO ADDED OBSTACLES LOOK?

## TABLE FORMAT



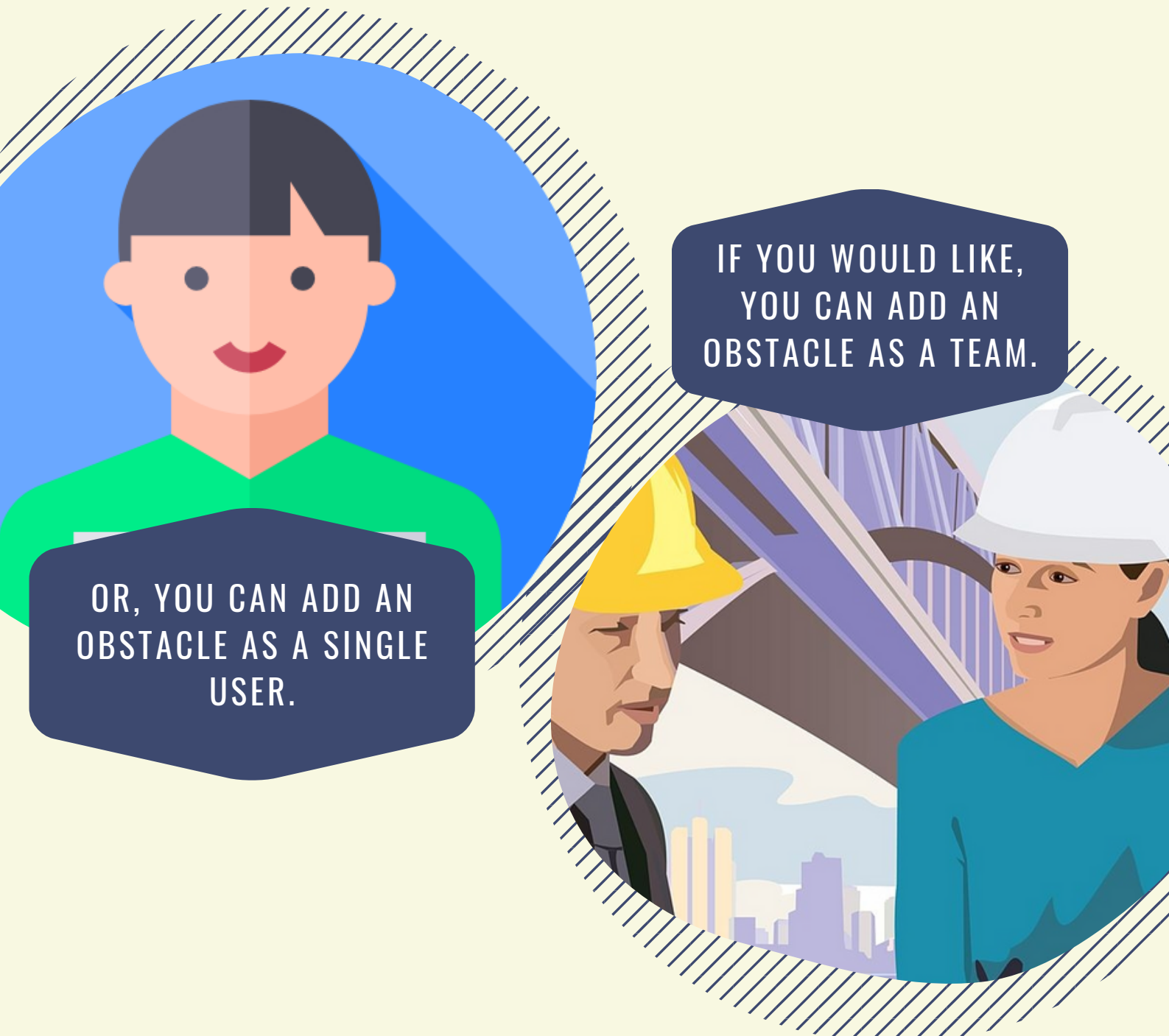
OBSTACLE TYPE	LATITUDE	LONGITUDE	ELEVATION AT TOP M	HEIGHT AMSL M	HEIGHT FT	ELI
POLE	37.72345278	38.46003611	679.64	10.0	32.8	2229.1
POLE	37.72363056	38.46029444	680.65	10.0	32.8	2233.11
POLE	37.72380833	38.46055278	681.27	10.0	32.8	2235.14
POLE	37.72398333	38.46081111	681.54	10.0	32.8	2236.03
POLE	37.72415833	38.46106944	681.9	10.0	32.8	2237.21
POLE	37.72433333	38.46132778	682.08	10.0	32.8	2237.8
POLE	37.72451111	38.46158611	682.36	10.0	32.8	2238.72
POLE	37.72468611	38.46184444	682.46	10.0	32.8	2239.05
POLE	37.72486389	38.46210278	682.32	10.0	32.8	2238.59
POLE	37.72504167	38.46236111	682.52	10.0	32.8	2239.24
POLE	37.72521667	38.46262222	682.31	10.0	32.8	2238.56
POLE	37.72538889	38.462875	682.08	10.0	32.8	2237.7
POLE	37.73847222	38.47694444	675.16	10.0	32.8	221
POLE	37.73864444	38.47718889	673.85	10.0	32.8	
POLE	37.72867778	38.46258056	683.58	10.0	32.8	
POLE	37.72850556	38.462325	682.3	10.0	32.8	
POLE	37.72832778	38.46206389	680.77	10.0	32	



## ON THE MAP



# WHO CAN ADD AN OBSTACLE?



IN OBSTACLEANALYZE, YOU CAN PERFORM YOUR ANALYSIS EITHER WITH A SINGLE USER ACCOUNT OR WITH A TEAM ACCOUNT, CONSISTING OF AN AUTHORIZED ACCOUNT AND USER ACCOUNTS CONNECTED TO IT. EACH OBSTACLE ADDED BY USERS IN THE TEAM ACCOUNT IS APPROVED BY THE AUTHORITY. IF THE AUTHORITY HAS APPROVED THE OBSTACLE, THEN THE WHOLE TEAM CAN VIEW THE NEW OBSTACLE AND USE IT IN THEIR ANALYSIS.

# WHAT ARE THE PRINTABLE FORMATS OF ANALYSIS IN OBSTACLEANALYZE?

YOU CAN EXPORT YOUR TABLES AS  
.XLSX, .KML, .CSV .PDF

OBSTACLE TYPE	LATITUDE	LONGITUDE	ELEVATION AT TOP M	HEIGHT AMSL M	HEIGHT FT	ELL
POLE	37.72345278	38.46003611	679.64	10.0	32.8	2229.1
POLE	37.72363056	38.46029444	680.65	10.0	32.8	2233.11
POLE	37.72380833	38.46055278	681.27	10.0	32.8	2235.14
POLE	37.72398333	38.46081111	681.54	10.0	32.8	2236.03
POLE	37.72415833	38.46106944	681.9	10.0	32.8	2237.21
POLE	37.72433333	38.46132778	682.08	10.0	32.8	2237.8
POLE	37.72451111	38.46158611	682.36	10.0	32.8	2238.72
POLE	37.72468611	38.46184444	682.46	10.0	32.8	2239.05
POLE	37.72486389	38.46210278	682.32	10.0	32.8	2238.59
POLE	37.72504167	38.46236111	682.52	10.0	32.8	2239.24
POLE	37.72521667	38.46262222	682.31	10.0	32.8	2238.56
POLE	37.72538889	38.462875	682.08	10.0	32.8	2237.1
POLE	37.73847222	38.47694444	675.16	10.0	32.8	221
POLE	37.73864444	38.47718889	673.85	10.0	32.8	
POLE	37.72867778	38.46258056	683.58	10.0	32.8	
POLE	37.72850556	38.462325	682.3	10.0	32.8	
POLE	37.72832778	38.46206389	680.77	10.0	32.8	

YOU CAN GET REPORTS AS .PDF  
OUT OF THE SYSTEM.

Enlem : 40.07807143, Boylam : 30.00000000

	Mania Planı	
Kalkıp-Tormanış Yüzey Kotu	142 m	
Yaklaşma Yüzey Kotu	156 m	
İzin Verilen Yapı Kotu	142 m	
Zemin Kotu	11 m	

☐ Bu noktayı mania olarak ekle.

Sorgu sonucunu yazdırın

Bilgi, yardım veya mühendislik hizmeti ile çözüm için HaritaEvi ile iletişime geçiniz.

# SOFTWARE SPECIFICATIONS AND SYSTEM REQUIREMENTS

## DEVELOPMENT TOOLS



JavaScript

## USED APPLICATIONS



PostgreSQL

NGINX



Apache Tomcat

## SYSTEM REQUIREMENTS



LINUX  
Operating System

Processor: 1CPU (8Core)+  
RAM: 8GB +  
HDD: 160GB +

ACCORDING TO THE NUMBER OF USERS, SYSTEM REQUIREMENTS  
CAN BE INCREASED. OBSTACLEANALYZE IS A SOFTWARE PLATFORM  
THAT CAN BE CUSTOMIZED ACCORDING TO REQUIREMENTS.



OBSTACLEANALYZE IS HARITAEVI PRODUCT